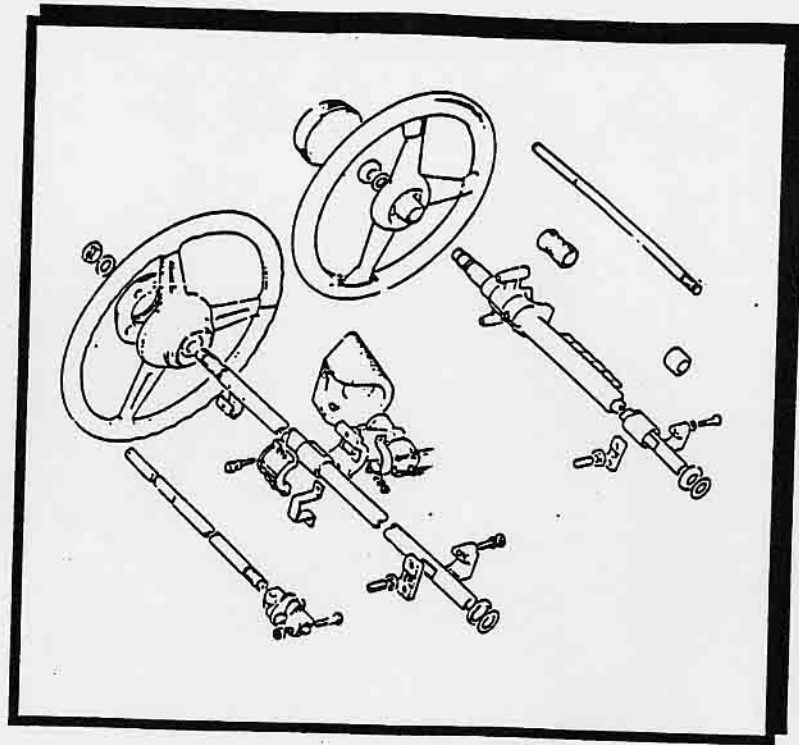




same the only difference being a 'flat' machined on the inner shaft and a hole in the column for the lock to fit over. The post 1977 1500 Spitfire had a totally different column which was required due to a different set of column switches. These switches gave not only lights and indicator functions but also included push button horn, windscreen wipers and washer. A different pair of switch covers was also used.

It should be remembered that the linkage between the inner steering column and the rack coupling is in fact unique to Marcos and differs depending on whether your car is a wooden chassis'd model or steel.



Most of the front suspension is common throughout the Herald/Spitfire/Vitesse & GT6 range however the differences can be summarised as follows:

The vertical links (upright) and stub axle differ for the Herald/Spitfire which uses smaller brake calipers. The vertical links have the brake mounting points within the one piece upright. GT6/Vitesse have separate caliper mounting brackets which bolt to the back of the upright.

Vitesse MK1 used the GT6/Vitesse upright/stub axle but had a smaller caliper mounting bracket and used the early Spitfire calipers.

Some pre-1967 Marcos will have had this set-up (Mine included). To upgrade to the later GT6 calipers you simply need the larger mounting plates and the GT6 discs.

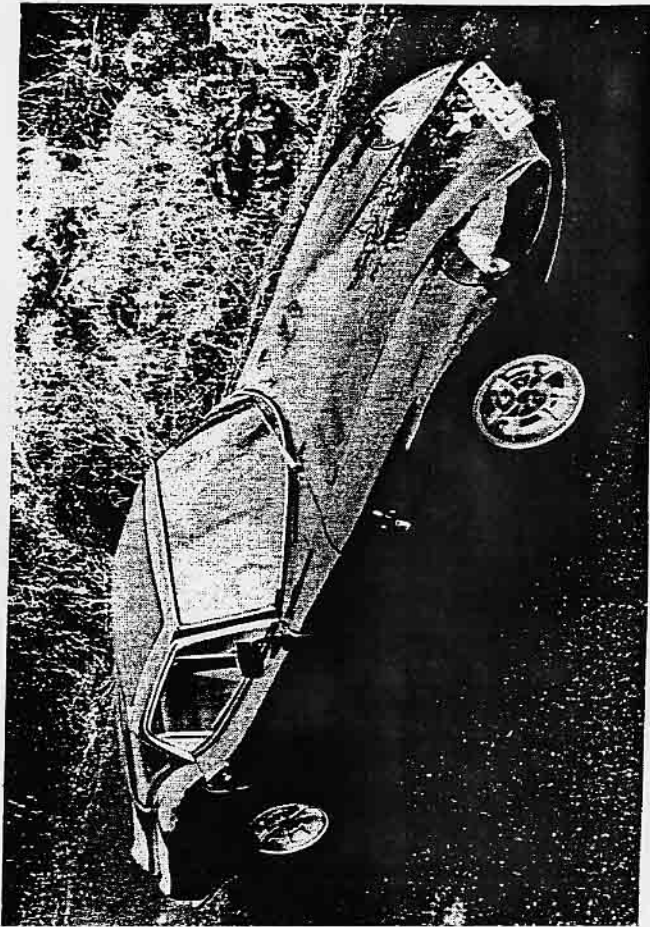
The GT6/Vitesse hubs are bigger than the Herald/Spitfire and cannot be interchanged without using the corresponding upright/stub axle assembly.

The front anti rollbar (not illustrated) differs in thickness depending on the model/year of the Triumph car involved, some late 60's Marcos appear to have left the factory without rollbars (the chassis's having no attachment points). A breakdown of the available rollbars follows:

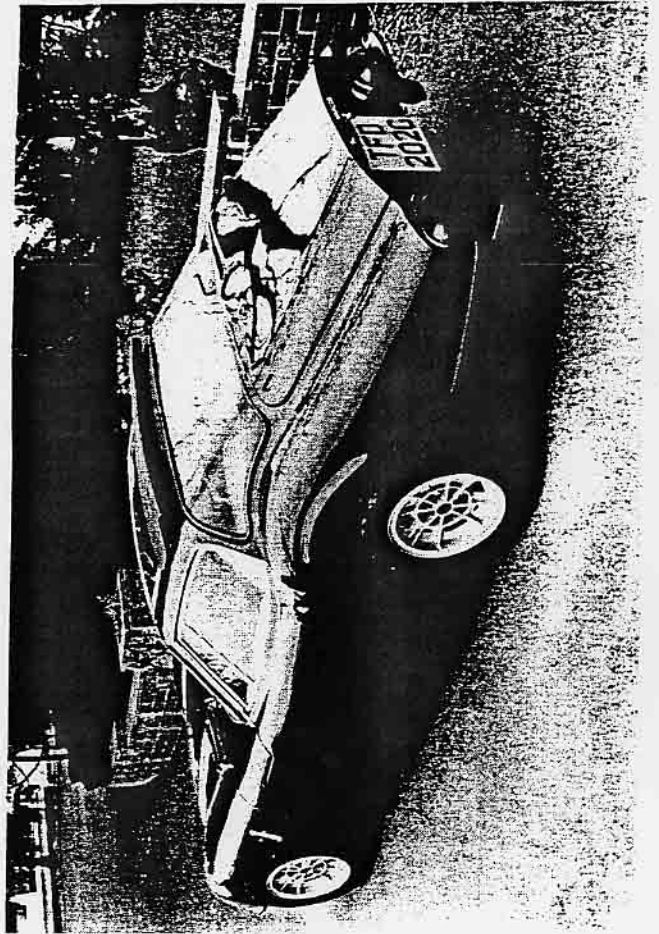
Spitfire Mk 1,2,3,4/Herald/Vitesse used a 0.875 inch bar:  
part no 207093.

Spitfire 1500 & GT6 used a 1.00 inch bar:  
part no 217033

All other anti rollbar components (links etc) are the same for all models.



1600 Coupe - Glynn Kerr, Devon



The following is a breakdown of components and their associated part numbers together with a guide to cost as of December 1992. Some suppliers will recognise the parts against their own numbering system, it is therefore best to give a description and where applicable left or right hand, as well as the quoted part number.

Front Suspension		Price
514191	Trunnion overhaul kit	3.00
140919	Trunnion right hand	12.00
140920	Trunnion left hand	12.00
122126	Trunnion to vertical link seal	1.00
119142	Trunnion nut & bolt	1.00
206685	Lower wishbone RH	48.00
206686	Lower wishbone LH	48.00
119451	Bush - all wishbones	0.75
145007	Front hub - GT6	75.00
112429	Wheel stud	1.30
132065	Stub axle - GT6	20.00
	Front wheel bearing kit	10.00
132665	Front bearing grease cap	2.30
132666	Front bearing D washer	1.15
	Front hub casalated	0.50
209072	Vertical link RH - GT6	36.00
209073	Vertical link LH - GT6	36.00
205504	Steering arm RH - GT6	16.50
205505	Steering arm LH - GT6	16.50
145106	Caliper Mounting plate RH - GT6	S/hand
145107	Caliper mounting plate LH - GT6	S/hand
119272	Top wishbone	15.50
	Top ball joint	8.00
	Nut & Bolt - top ball joint	0.50
122022	Camber adjustment shims	1.00

Anti Rollbar	Price
207093	15.00
217033	35.00
123998	0.60
155310	0.90
123502	1.40
155308	1.00
139126	0.75
155307	0.75
125074	1.25
125481	9.00
125482	9.00
Steering	Price
307830	30.00
156024	8.50
139385	1.45
	5.00
	8.00
209423	3.75
142140	14.00
	0.40
	S/hand
152616	21.00
158966	8.50
142534	8.50
159761	8.50

Finally there are several very reputable Triumph specialists which stock all the parts you might require and offer a next day delivery service. Four of the top ones (according to the Triumph Sports Six Club) are currently :

John Hill's Ltd  
Arthur Street,  
Lakeside,  
Redditch.  
Tele : 0527 20880

Rimmer Brothers Ltd,  
Triumph House,  
115 Lincoln Rd,  
Branston,  
Lincoln.  
Tele : 0522 791965

TriumphTune  
22-28 Manor Rd,  
Richmond,  
Surrey.  
Tele : 081-948-6668

John Kipping  
Parrots Grove  
421 Aldermans Green Rd,  
Coventry.  
Tele : 0203 645333

I have personally used all of the above companies who will also supply second hand spares when available. All take over the phone orders via the major credit cards and are very helpful if you have any problems.

Andy Derrick.

### Marcos Component Source List

The following component parts lists have been assembled from member contributions as cars have either been restored or newly built, and carries no official factory backing.

Please note that with the early generation cars, it is highly probable that parts other than those listed have been used as replacements. The recommendation is therefore to check part numbers yourself if there is any possible doubt.

Where possible the original fitment has been quoted to allow for any alternative suppliers of proprietary parts or possible up-dating of the original factory part numbers.

Remember, this list has been compiled by ordinary members like yourself. The next time you replace an item on your Marcos, you now have an easy way to contribute to YOUR club.....

SEND THE DETAILS IN !



Location	Model	Description	Original Fitment	Part Number(s)
Bodywork	1800 Volvo	Door locks	Austin A40	BL 14A 4485
	1800 Volvo	Interior Chrome door pull	Vitesse range	BL 609256
	1800 Volvo	Interior Plastic door pulls	BL Midget range	BL 3479
	General	Chrome Bonnet catch	Triumph	BL 607663
	General	Chrome bonnet catches	Vitesse & Spitfire	Triumph 514191
	General	Door Window seal strips	Triumph range	BL 608278 & 608279
	General	Door handle - metal chassis	MGB GT	
	General	<del>Interior Door Pulls</del>	BMC 1100 & Soridget Range	
Front Suspension	1800 Volvo	Axle Stub Shaft	Herald	Unipart 132488
	1800 Volvo	Inner wheel bearing	Herald & Spitfire	Timken 071005 & 072101
	1800 Volvo	Outer Wheel Bearing	Herald & Spitfire	Timken 03162 & 03062
	1800 Volvo	Vertical Links	Herald & Spitfire	Unipart 205483 & 205484
	General	Axle Stub Shaft	Vitesse	Unipart 132488
	General	Brake Caliper mount plate	Vitesse	Unipart 210892/210893
	General	Brass Trunnions	Vitesse	Unipart 140919/140920
	General	Castellated hub nut	Vitesse	Unipart LN 2211
	General	Front hub felt seal	Vitesse & Spitfire	Unipart GHS 146
	General	Front wheel bearing (inner)	Triumph Vitesse	Timken L44649 & 44610
	General	Front wheel bearing (outer)	Triumph Vitesse	Timken LM11949 & LM11910
	General	Hub grease cap	Vitesse	Unipart 102689
	General	Top Ball joint	Triumph range	Dunton Hazel 05J 103
General	Vertical Links	Vitesse	Unipart 209072 & 209073	
Rear Suspension	General	Halfshaft Bearing	Ford Cortina rear axle	Ford 2925E 1225C
	General	Pannard Rod bushes	General Damper mounts	BL 21 A 860
	General	Radius arm bushes	BLMC range	BL 88 G 274
	General	Radius arm bushes	BLMC range	Metalastic 13/908
	General	Small Radius arm bush	General Damper mountings	BL 21 A 860
Engine	1800 Volvo	Oil Pump	Volvo B18B series	FE 90L 745
	2LV4 Ford	Engine mounts	Ford V4 range	Ford 1422786
	3LV6 Ford	Engine mountings	Ford Zodiac	
Transmission	1600 Ford	Speedo driven gear	Ford	109E17322B (24 teeth/green)
	2LV4 Ford	Speedo driven gear	Ford	Ford 107E 17322
	3LV6 Ford	Gearbox rear bush	Ford Zodiac IV	Ford 1711053
	3LV6 Ford	Gearbox rear seal	Ford Zodiac IV	Ford 1518659
	3LV6 Ford	O/D Relief valve	Ford Zodiac	Ford 7K677C
	3LV6 Ford	Speedo driven gear	Ford	Ford 211E 17322-0
	3L Volvo	Speedo driven gear	Volvo	
	General	O/Drive relay (when fitted)	Lucas	Lucas 6RA
	General	Propshaft UJs	Ford	Ford 1792216
General	Propshaft UJs	Hardy Spicer	U-50/K5-68150	
Wheels	General	Wheel Studs	Ford Corsair	
Steering	General	Lower column/rack coupling	Triumph range	

Location	Model	Description	Original Fitment	Part Number(s)
Steering	General	Steering Column Escutcheons	Vitesse & Spitfire range	
	General	Steering Column UJ	Triumph 2000 MkII (UJ only)	QSH 1176
	General	Steering Links	Vitesse	Unipart 205504 & 205505 (R/L)
	General	Steering column bushes	Triumph range	Unipart 209423
	General	Steering rack bellows	Triumph range	Quinton Hazel MB 1
	General	Steering rack mount clamps	Vitesse	Unipart 136885
	General	Steering rack rubber mounts	Triumph Vitesse & Spitfire	Unipart 139386
	General	Track Rod ends	Vitesse	QR 1572
Braking System	General	Caliper Bleed Screw	Girling (3/8" UNF x 24 tpi)	Girling 64470445
	General	Front Caliper seals		Girling SP2697/1
	General	Front Calipers	Triumph	64032668/69 or 64032149/50
	General	Front brake pads	Triumph range	Girling GDB 533
	General	Front caliper o/haul kit	Triumph Spitfire or GT6	Girling SP 2501/3
	General	Front caliper piston	Triumph Spitfire or GT6	Girling 64325561
	General	Handbrake components	Ford Cortina	
	General	Handbrake system (1966-)	Ford Cortina Mk I (Late)	
	General	Rear Brake shoes	Ford Cortina Mk II	Ford 2920E 2218 2219
	General	Rear brake adjuster	Ford Cortina	Ford 1720014
General	Rear wheel cylinder	Ford Cortina 1600	Ford 64676001	
Cooling System	1600 Ford	System Hoses		Quinton Hazel RH694 & RH783
	3LV6 Ford	Water Pump	Ford Zodiac	Ford 2720E 8501C
	3L Volvo	Water pump	Quinton Hazel	QCP 771
Fuel System	1600 Ford	Petrol pump o/haul kit (mech)	Ford	AC Delco 465/25 (93151242)
	3LV6 Ford	Mechanical fuel pump	Ford V6 series	AC Delco XP 1464
	General	Petrol filler cap	Norton Commando	Ceandess P2518/3A or P4199
	General	Petrol filler neck grommet	Various applications	Soedex
Electrical System	1800 Volvo	Rear Lens (Amber)	Hillaan 1ap	Lucas 54581233
	1800 Volvo	Rear Lens (Red)	Hillaan 1ap	Lucas 54581204
	1600 Ford	Rear lens (amber - oval unit)	Vauxhall Victor FB	Lucas 54574292-7
	1600 Ford	Rear lens (red - oval unit)	Vauxhall Victor FB	Lucas 54574292
	1600 Ford	Rear light unit (oval)	Vauxhall Victor FB	Lucas 684 541518 & 541528
	1600 Ford	Starter motor (inertia model)	Ford Cortina & BL A series	Lucas M3561 25083DH or 251479
	1600 Ford	Starter motor (inertia)	Ford Cortina & BL 1100/1300	Lucas 25147 (late part No)
	1600 Ford	Starter motor (pre-engaged)	BL Maxi 1750 & Ford unit	Lucas 25209
	1600 Ford	Starter solenoid (inertia)	Triumph range	Lucas 76771 (later part no.)
	2LV4 Ford	Indicator Flasher Unit	Mini	Lucas 8FL36
	2LV4 Ford	Window winder motor		BL 217350 LH
	2LV4 Ford	Windscreen Wiper Gear Unit	BL Allegro	Lucas 54702587
	2LV4 Ford	Windscreen Wiper Motor	BL Midget	Lucas 75664
	3LV6 Ford	O/D reverse light switch	Ford Zodiac	Ford 1458708
	3LV6 Ford	Wiper Switch unit	Morgan	Lucas 35889
	3L Volvo	Alternator	Volvo	Volvo 419420-5
	3L Volvo	Petrol sender unit	Smiths	Smiths TB 114/013
	3L Volvo	Starter Motor	Volvo	Volvo 241615-4
	General	Front Indicator/sidelight	A40 & Morris Minor	Lucas 52572

Location	Model	Description	Original Fitment	Part Number(s)
Electrical System	General	Fusebox (2 fuse system)	BL ranges 1961-66	Lucas 54038068 (late part No)
	General	Hazard Flasher (where fitted)	BL range - Mini etc	Lucas 35053
	General	Headlight (Rectangular Unit)	Vauxhall HB & HC	
	General	Headlight (Rectangular)	Vauxhall Viva HB & HC	
	General	Ignition Switch	Hillman Minx Hunter early Imp	Lucas 34680
	General	Ignition Switch unit	General component	Lucas 35870
	General	Indicator Flasher unit	BL range - Mini etc	Lucas 35048
	General	Indicator switch (Column)	Triumph Vitesse	Lucas 54033733
	General	Interior light assembly	Bedford Commercial range	Vauxhall 6353758
	General	Light Switch (column mount)	Triumph Range	Unipart 35778
	General	Number Plate light unit	MGB Bumper unit (?)	Lucas 54108
	General	Stoplight switch unit	Hillman Imp	Lucas 34619
Heating/Ventilation	3LV6 Ford	Heater mounting bushes	Hillman Minx & Rover 2000	
	General	Heater Blower unit	Hillman Super Minx 1967	
	General	Heater Control valve	Smiths (some models)	Smiths FHW/1279/14
	General	Heater Unit		Smiths PES 7569/2
Clutch	1600 Ford	Clutch Slave cylinder kit	Ford	Girling SP 2085
	1600 Ford	Clutch Thrust bearing	Ford range	Quinton Hazel CCT 95
	1600 Ford	Clutch plate	Ford Cortina	Borg & Beck HB 1600
	1600 Ford	Spigot bearing	Ford 1600	Ford 170169J
	3L Volvo	Clutch plate assembly	Borg & Beck 9" unit	75599/26 & 47626/227
Rear Drive	General	Differential oil seal	Ford Cortina	Ford 1482506
	General	Half Shaft bearing	Ford Cortina	SNF 41592
	General	Pinion pre-load washer	Ford Cortina	Ford 1461760
	General	Rear Axle	Ford Cortina Mk II	V68CB-4004DA Ratio 3.77
	General	Rear Wheel/Axle bearing	Ford Cortina	Quinton Hazel MTW 119
Misc. Parts	General	Ash Tray	Willmot Breedon	Willmot Breedon 7/4009
	General	Boot Stay	Willmot Breedon	Willmot Breedon 7/7099
	General	Pedal Rubbers	Ford Anglia	Ford 105E 2454



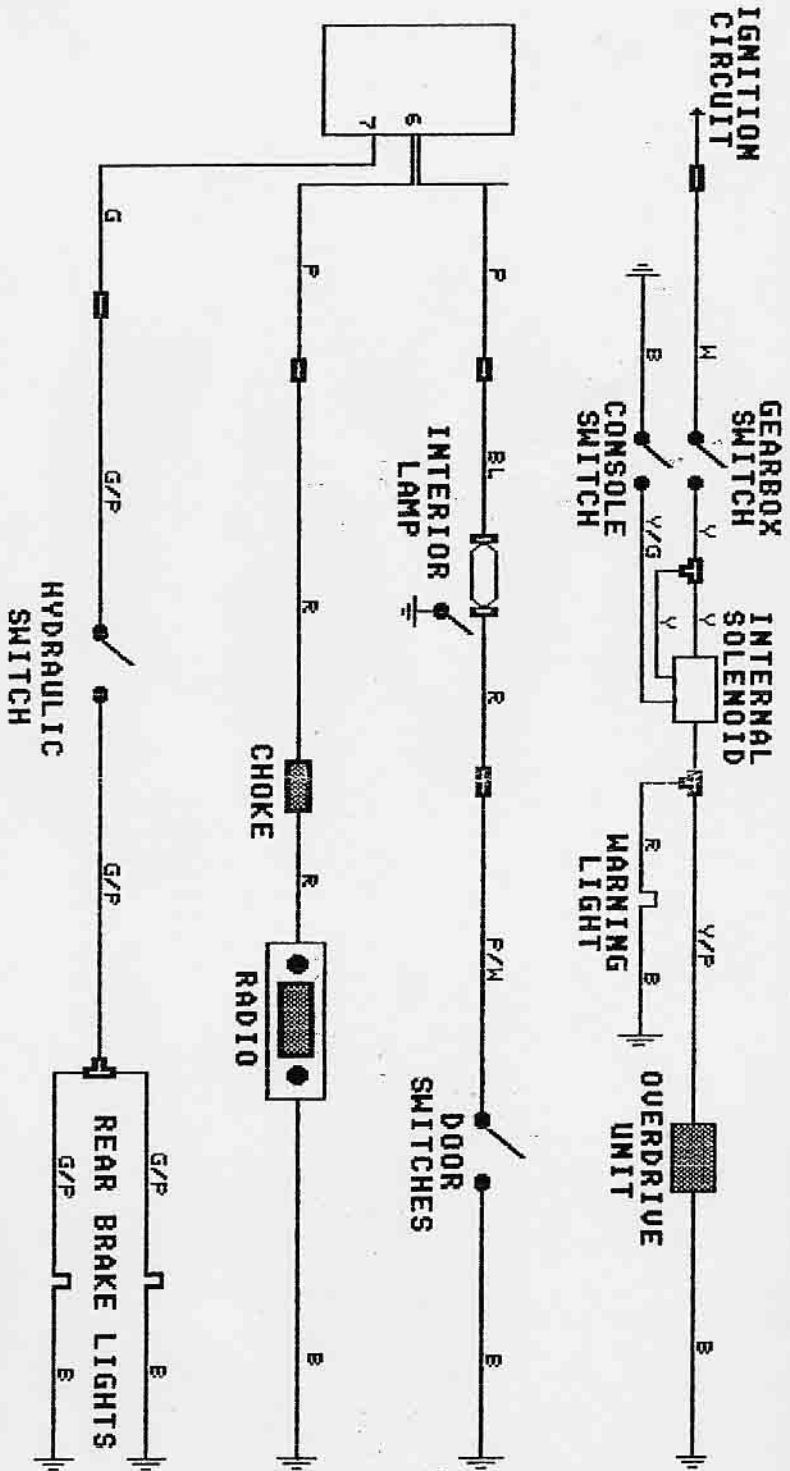
M O D E L   S P E C I F I C A T I O N   C H A R T

MODEL	ENGINE	GEAR BOX	REAR AXLE	FRONT SUSPENSION	STEERING RACK	FRONT BRAKES	REAR BRAKES	FRONT WHEEL TYRE ASSY.	REAR WHEEL TYRE ASSY.
MARCOS MANTULA	Rover SDI 3500 - 1977 On  Rover 3500 S 1969-76	5-speed Rover SDI	Ford Capri 3-litre Mark I II III 1969-on	Triumph Vitesse Mark II GT6 1968-on	Triumph Spitfire Vitesse GT6 1965-on	Marcos Ventilated Triumph Vitesse Mark II GT6	Ford Capri 3-litre Mark I II III 1969-on	195 x 60 VR 14 tyre. Max. load 1136 lb. @ 44 PSI. 6" wide rim.	205 x 60 VR 14 tyre. Max. load 1230 lb. @ 36 PSI 6" wide rim.
MARCOS 3-LITRE	Ford Capri 3-litre 1969 ON Mark I II III	Ford Capri 3-litre 1969-on (Single rail box preferred)	Ford Capri 3-litre Mark I	Triumph Vitesse Mark II GT6 1968-on	Triumph Spitfire Vitesse GT6 1965-on	Triumph Vitesse Mark II GT6	Ford Capri 3-litre Mark I	185 x 70 HR 13 tyre. Max. load 1140 lb. @ 36 PSI. 6" wide rim.	185 x 70 HR 13 tyre. Max. load 1140 lb. @ 36 PSI. 6" wide rim.
MARCOS 2-LITRE	Ford Cortina 3-litre OHC Ford Capri 2-litre OHC	Ford Cortina 2-litre Ford Capri 2-litre	Ford Capri 3-litre Mark I	Triumph Spitfire Vitesse GT6	Triumph Spitfire Vitesse GT6	Triumph Spitfire Vitesse GT6	Ford Capri 3-litre Mark I	185 x 70 HR 13 tyre. Max. load 1140 lb. @ 36 SPI. 6" wide rim.	185 x 70 HR 13 tyre. Max. load 1140 lb. @ 36 PSI. 6" wide rim.
MARCOS 1600	Ford Cortina 1600 OHN Ford Capri 1600 OHC	Ford Cortina 1600 OHC Ford Capri 1600 OHC	Ford Capri 3-litre Mark I	Triumph Spitfire Vitesse GT6	Triumph Spitfire Vitesse GT6	Triumph Spitfire Vitesse GT6	Ford Capri 3-litre Mark I	185 x 70 HR 13 tyre. Max. load 1140 lb. @ 36 PSI. 6" wide rim.	185 x 70 HR 13 tyre. Max. load 1140 lb. @ 36 PSI. 6" wide rim.

DRAWING NOT TO SCALE

MARCOS 1800L

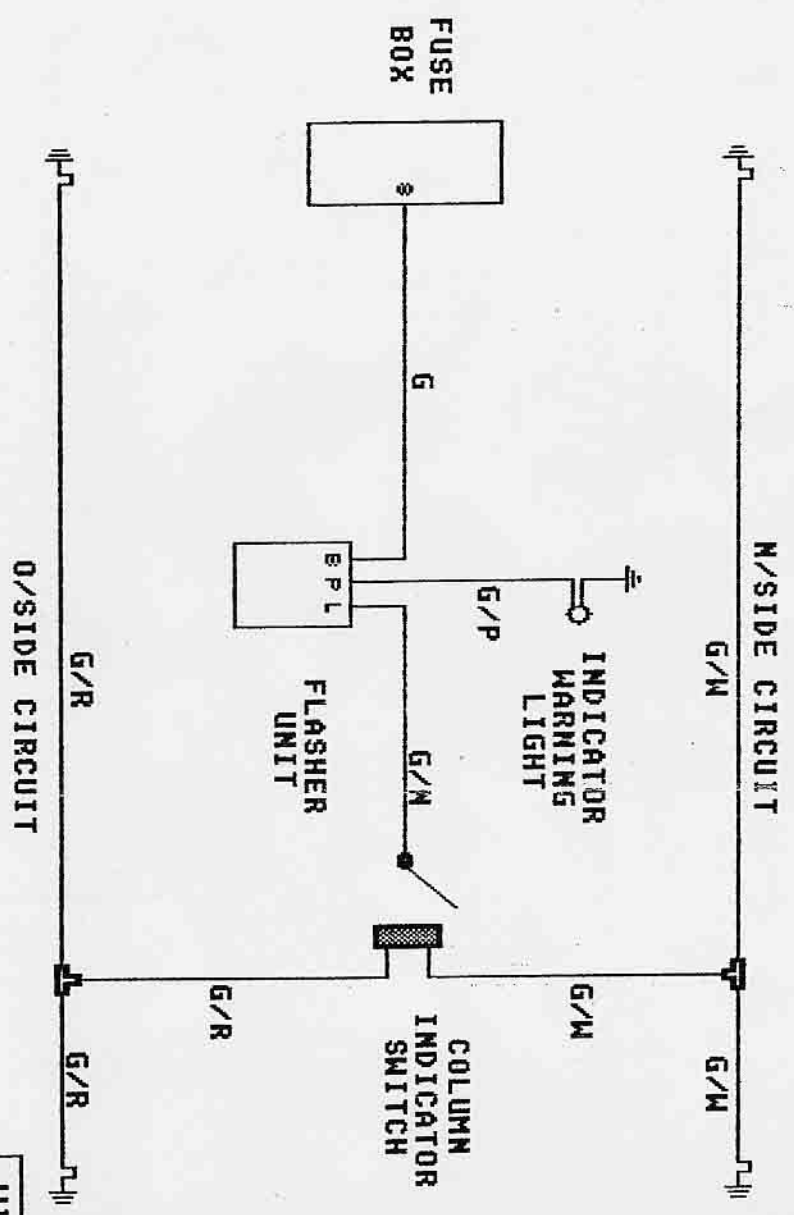
MISC. CIRCUITS



**WIRE COLOUR CODES**

B	BLACK
BL	BLUE
R	RED
M	WHITE
G	GREEN
P	PURPLE
N	BROWN
Y	YELLOW
O	ORANGE

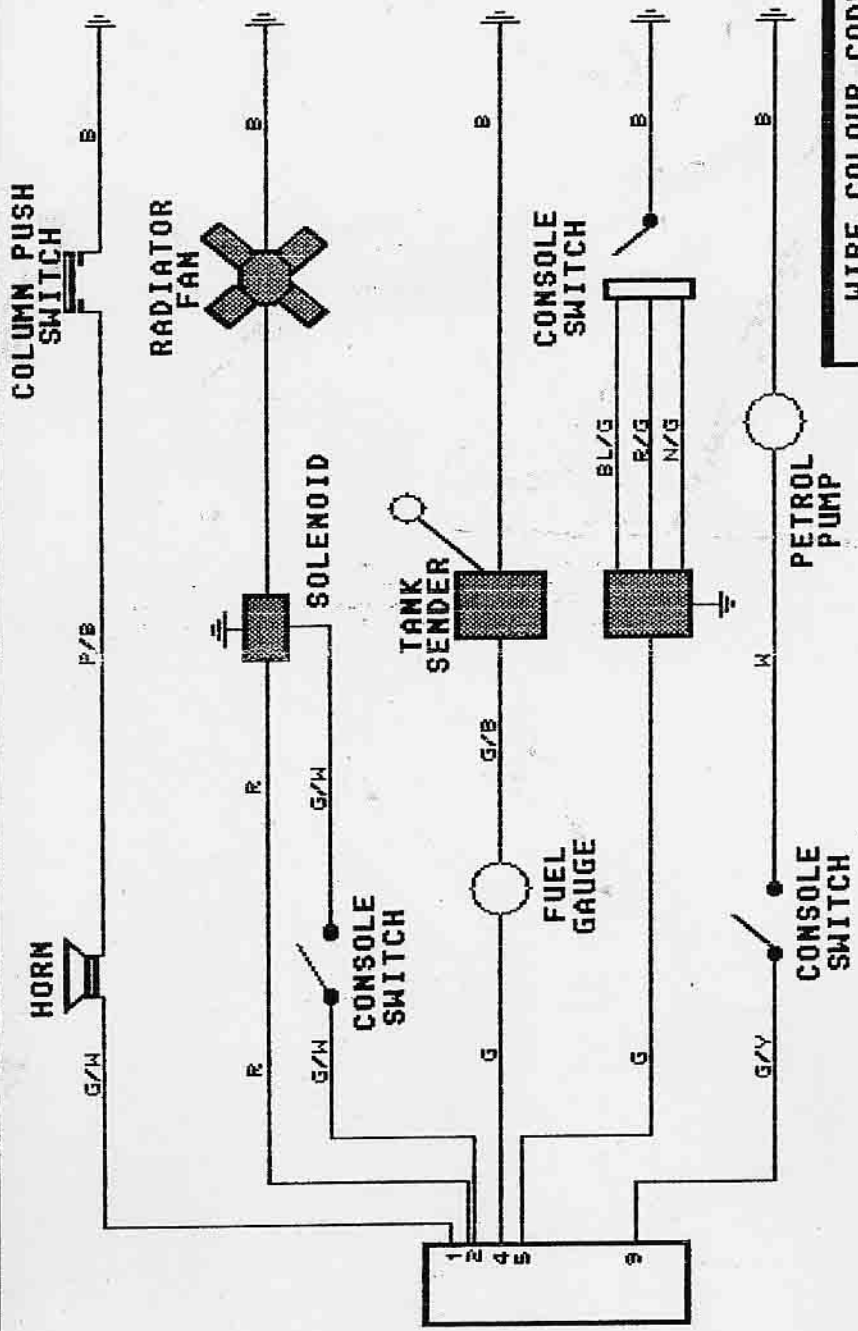
DRAWING NOT TO SCALE      MARCOS 1800L      INDICATOR CIRCUITS



**WIRE COLOUR CODES**

G	GREEN
R	RED
W	WHITE
P	PURPLE
N	BROWN

**DRAWING NOT TO SCALE**      **MARCOS 1000L**      **MISC. CIRCUITS**

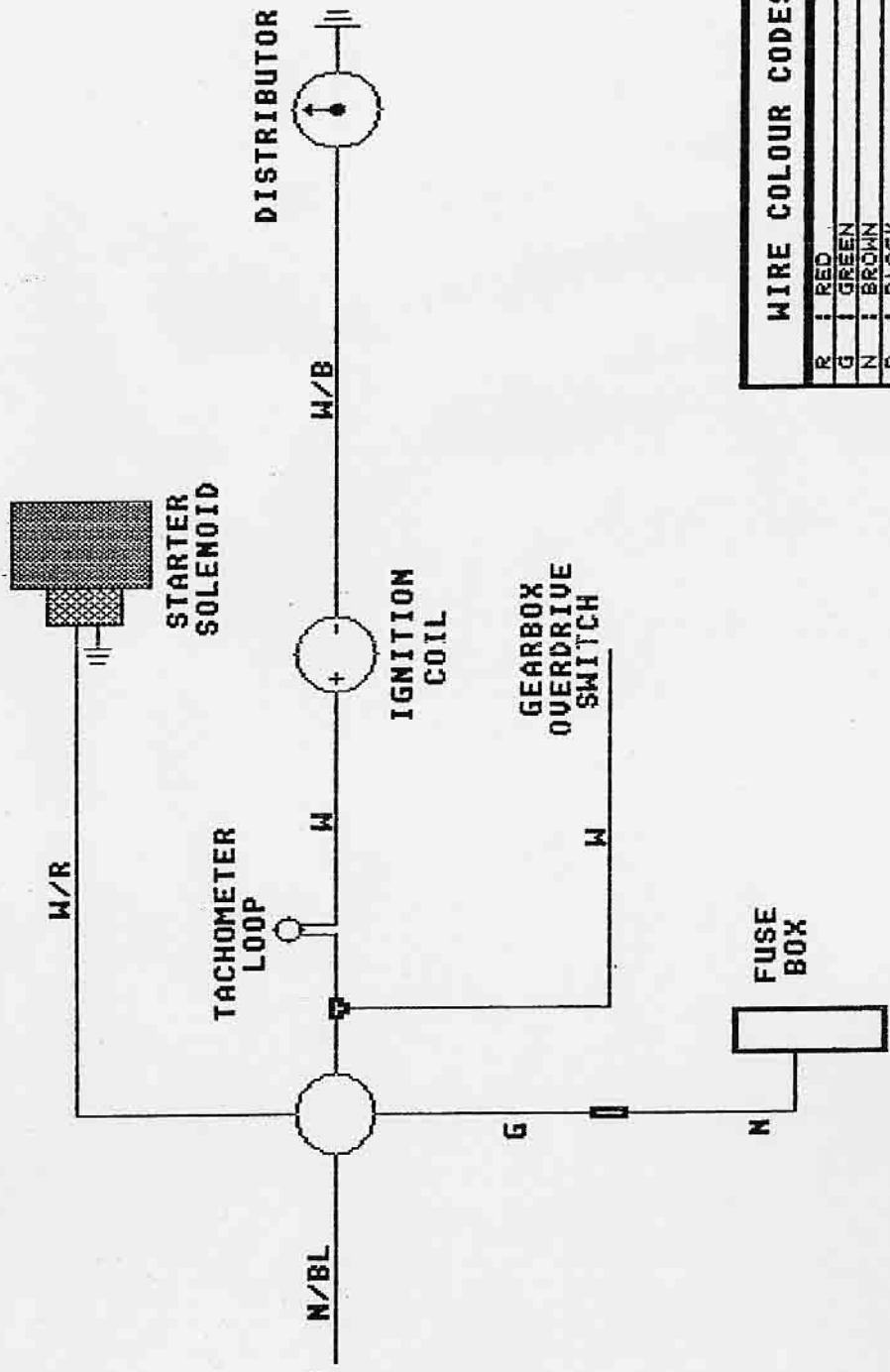


WIRE COLOUR CODES	
B	BLACK
BL	BLUE
R	RED
W	WHITE
G	GREEN
P	PURPLE
N	BROWN
Y	YELLOW
O	ORANGE

DRAWING NOT TO SCALE

MARCOS 1800L

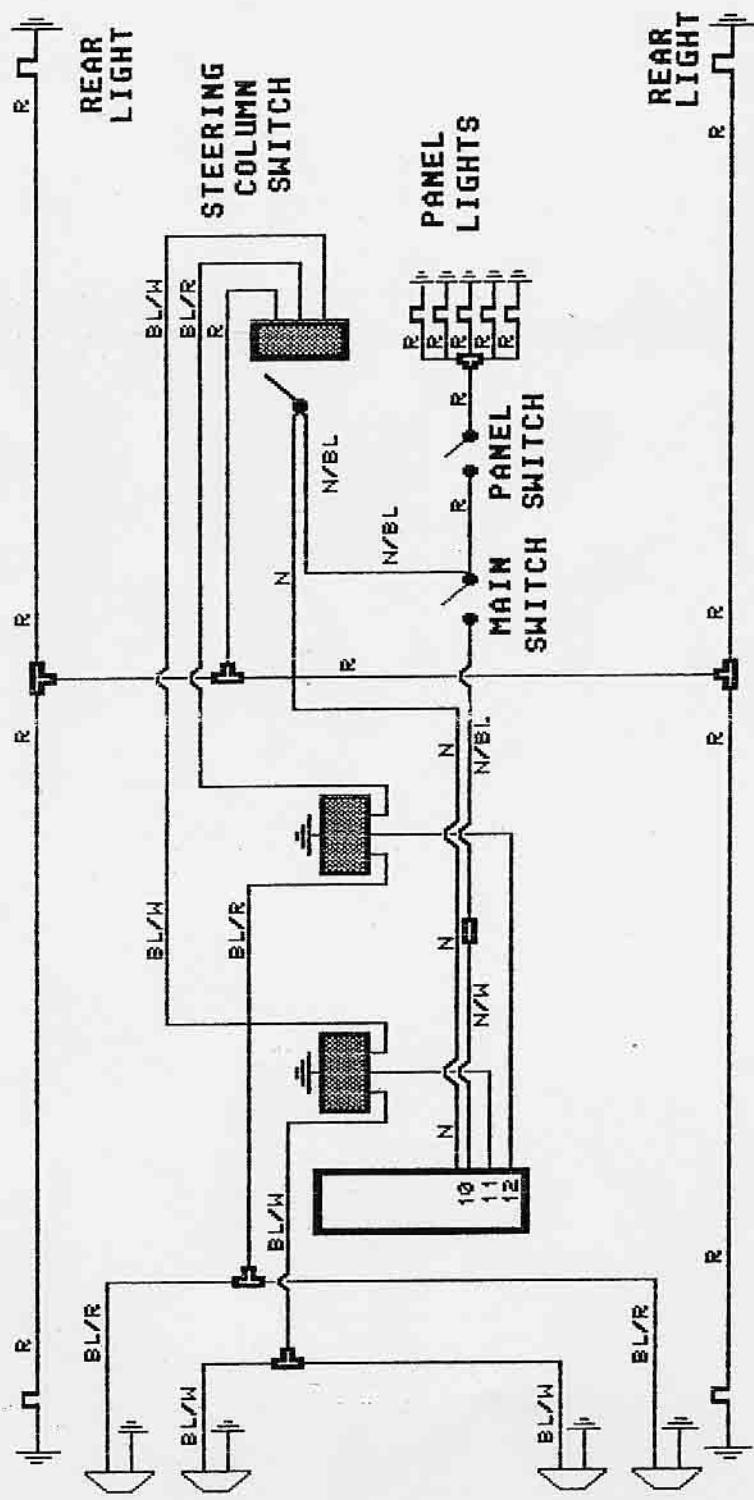
IGNITION CIRCUIT



WIRE COLOUR CODES	
R	RED
G	GREEN
N	BROWN
B	BLACK
W	WHITE
BL	BLUE

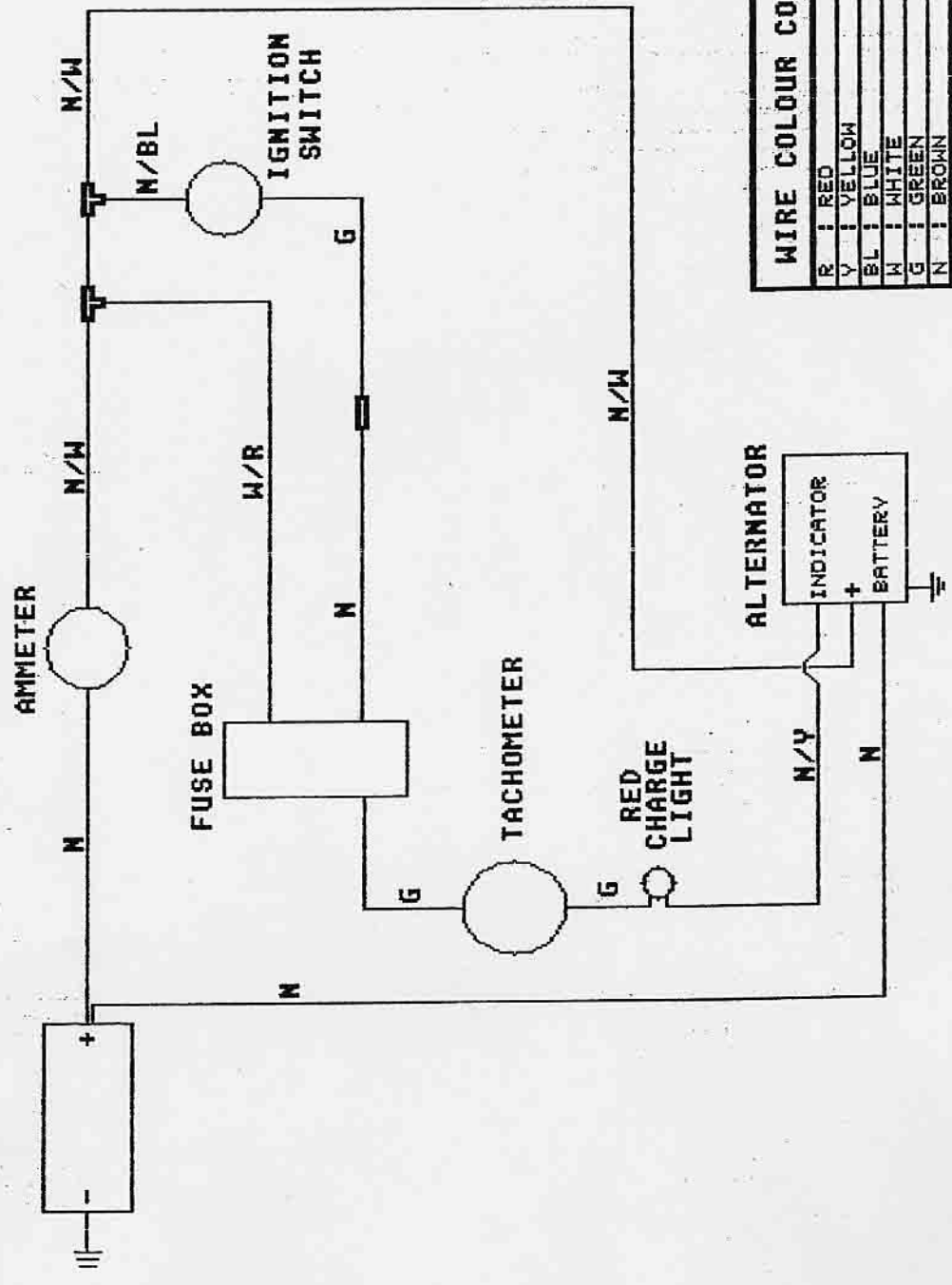


**DRAWING NOT TO SCALE**      **MARCOS 1000L**      **LIGHTING CIRCUITS**



WIRE COLOUR CODES	
B	BLACK
BL	BLUE
R	RED
W	WHITE
G	GREEN
P	PURPLE
N	BROWN
Y	YELLOW
O	ORANGE

**DRAWING NOT TO SCALE      MARCOS 1800L      CHARGING CIRCUIT**



WIRE COLOUR CODES	
R	RED
Y	YELLOW
BL	BLUE
W	WHITE
G	GREEN
N	BROWN

# MARCOS WIRING DIAGRAMS

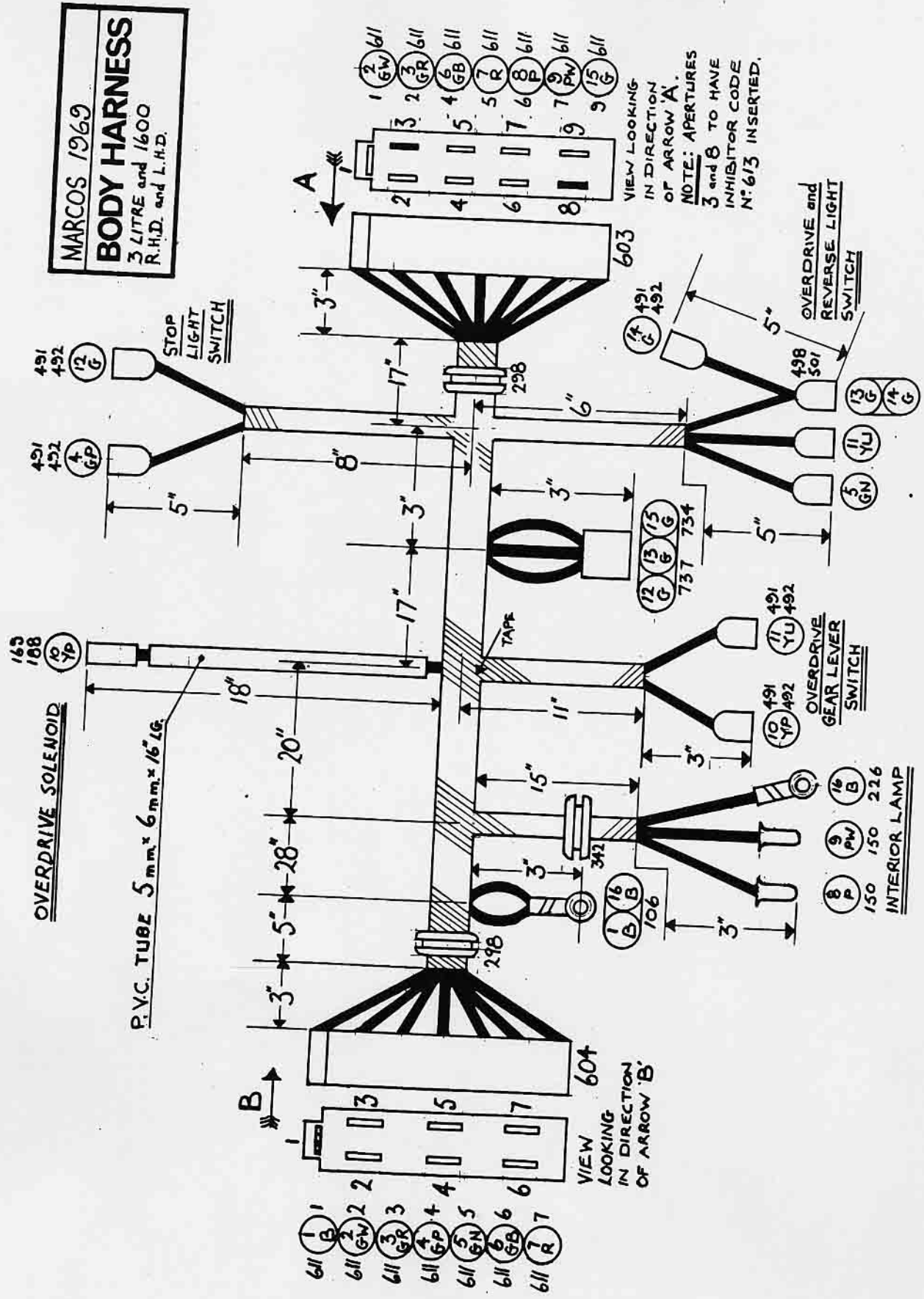
ISSUE DATE	CHANGES	SYM
26-5-69	Production issue	
27-5-69	Transfer of bulkhead	<b>A</b>
	Changed for double eyelet 105.	
	Sockets drawing No. 54957287	
	To replace bulkhead	
	Junction block 54935515	
	5½ dimension changed to 7½ dim.	
	5" dim. changed to 7" dim.	
	44" dim. changed to 36½" dim.	
	Addition of eyelet and snap.	
	Cond on heater	
	9" dim. changed to 10" dim.	
	5" dim. changed to 4" dim.	
	Eyelets 119 changed for 192.	
8-9-69	194 @ Fog & Spot lamp was 102.	<b>B</b>
11-12-69	5½" dim was 7½". Lead No. 3 491/492 was 493/494. 493/494 was 498/501 Lead No. 2.	<b>D</b>
31-7-70	Mouldings 54935511 & 16 altered pictorially.	<b>E</b>

These drawings have been redrawn by Roger Tripp and Chris Poolton. Could the member who sent in the originals please contact me. Unfortunately, the article has had to be split into two parts the remaining diagrams and legends will be in the next issue.

If any of these diagrams reproduced here after reduction and printing, appear too small to read even with a magnifying glass!! then they will be reprinted in the next issue, in a different size to overcome the problem.

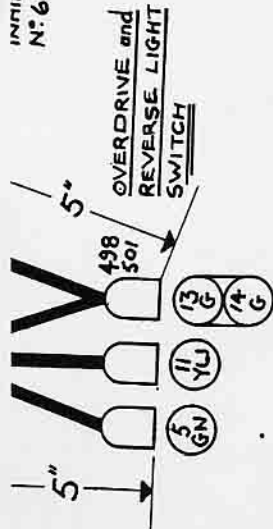


**MARCOS 1969**  
**BODY HARNESS**  
 3 LITRE and 1600  
 R.H.D. and L.H.D.

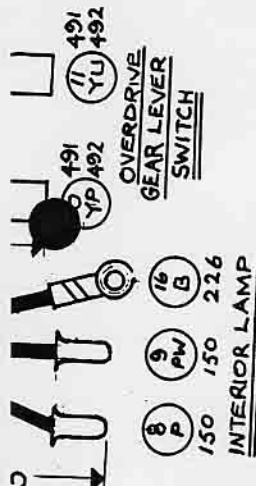




INITIATOR CODE  
N° 613



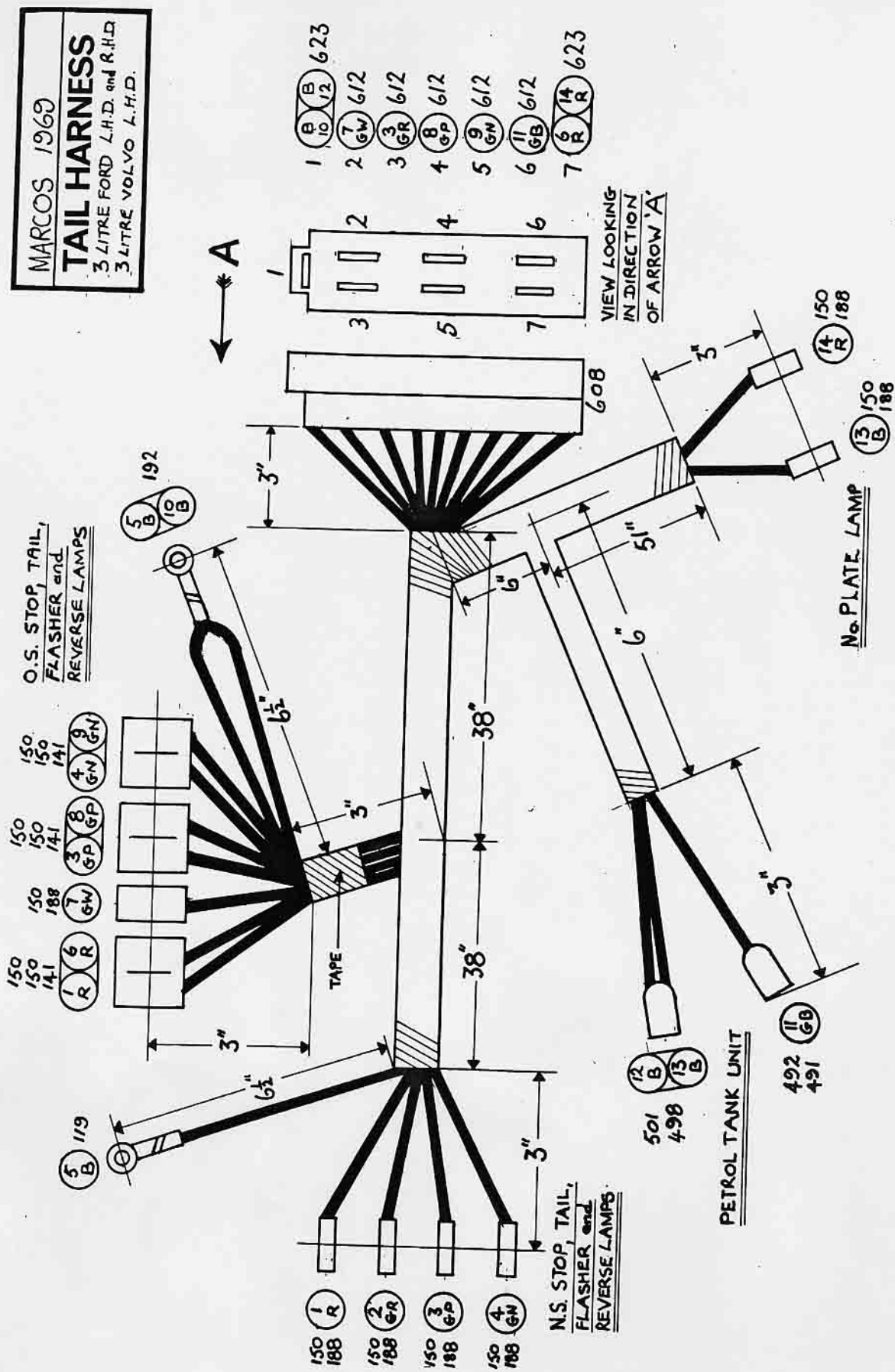
OVERDRIVE and  
REVERSE LIGHT  
SWITCH



OVERDRIVE  
GEAR LEVER  
SWITCH

INTERIOR LAMP

MARCOS 1969  
**TAIL HARNESS**  
3 LITRE FORD L.H.D. and R.H.D.  
3 LITRE VOLVO L.H.D.



- 1 (B) 10 12 623
- 2 (7) 6W 612
- 3 (3) 6R 612
- 4 (8) 6P 612
- 5 (9) 6N 612
- 6 (11) 6B 612
- 7 (6) 14 R 623

O.S. STOP, TAIL,  
FLASHER and  
REVERSE LAMPS

- 150 (1) R 141
- 150 (2) R 141
- 150 (3) 6W 141
- 150 (4) 6R 141
- 150 (5) 6P 141
- 150 (6) 6B 141
- 150 (7) 6N 141
- 150 (8) 6G 141
- 150 (9) 6W 141
- 150 (10) 6R 141
- 150 (11) 6B 141
- 150 (12) 6N 141
- 150 (13) 6G 141
- 150 (14) 6W 141
- 150 (15) 6R 141
- 150 (16) 6B 141
- 150 (17) 6N 141
- 150 (18) 6G 141

N.S. STOP, TAIL,  
FLASHER and  
REVERSE LAMPS

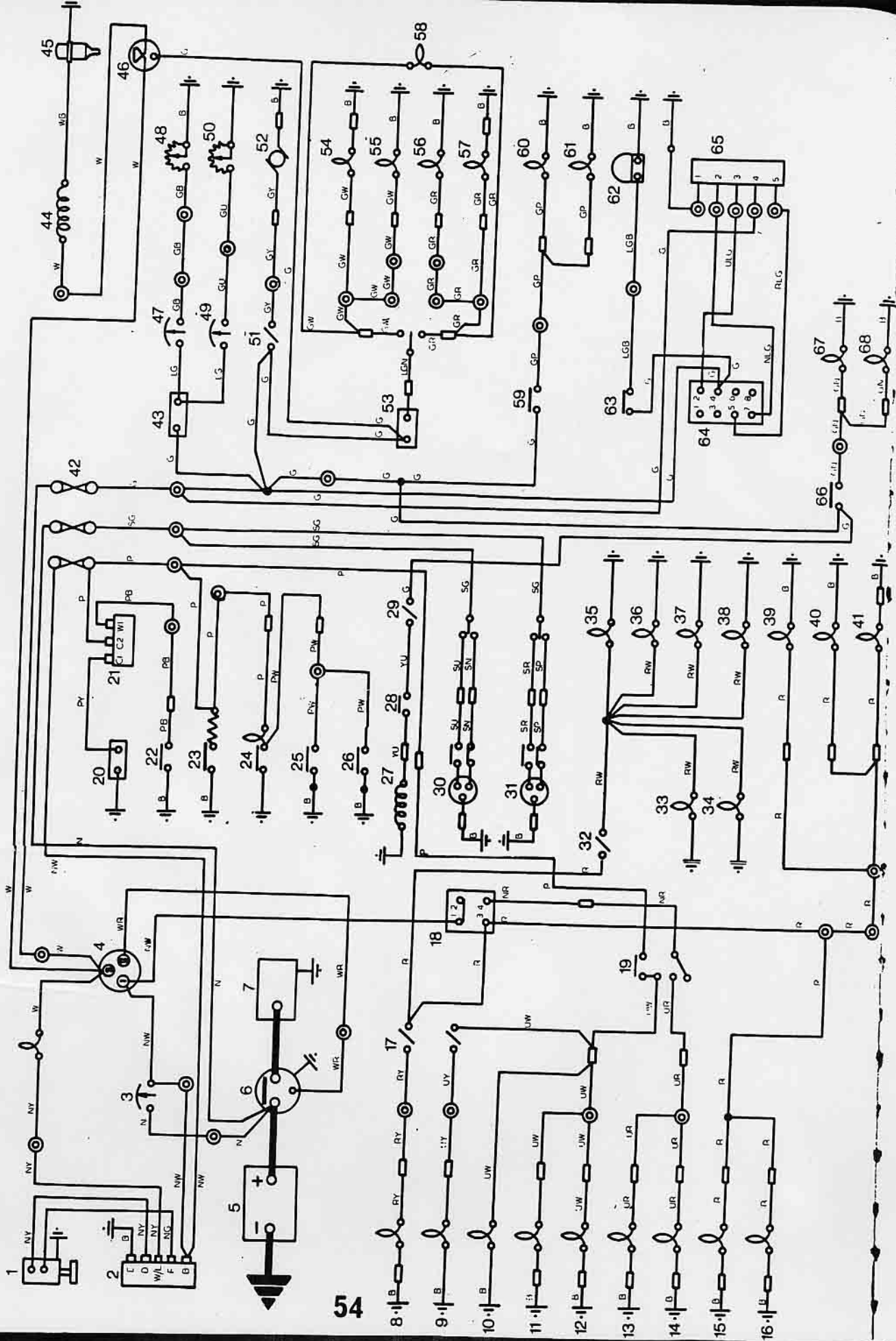
- 150 (1) R 188
- 150 (2) 6R 188
- 150 (3) 6P 188
- 150 (4) 6N 188

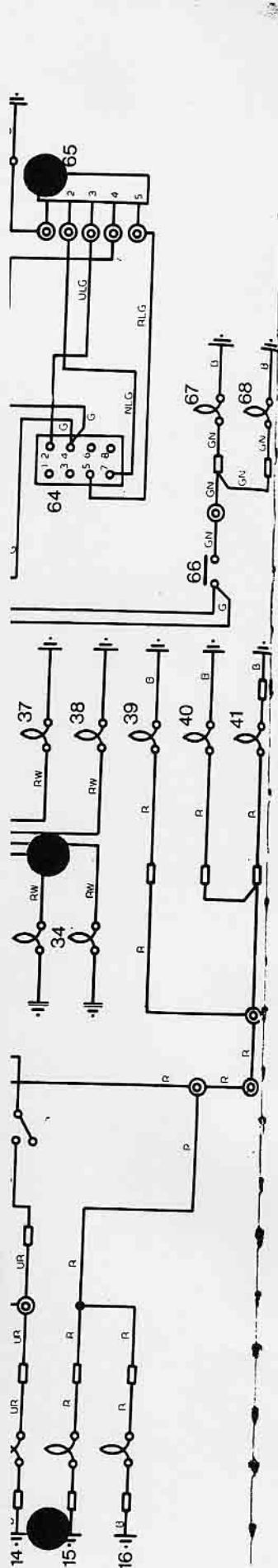
PETROL TANK UNIT

- 501 (12) B
- 498 (13) B
- 492 (11) 6B
- 491 (14) R

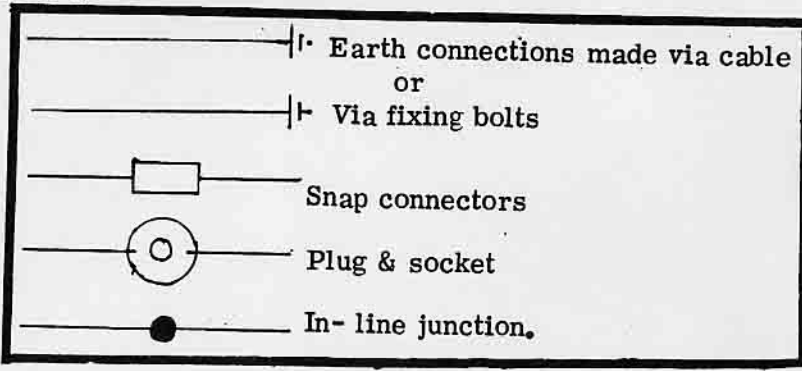
No. 1 PLATE LAMP

- 150 (14) R 188
- 150 (13) B 188





1. GENERATOR
2. CONTROL BOX
3. AMMETER
4. IGNITION SWITCH
5. BATTERY
6. STARTER SOLENOID
7. STARTER MOTOR
8. FOG LAMP
9. LONG RANGE DRIVING LAMP
10. MAIN BEAM WARNING LAMP
11. R. H. MAIN BEAM
12. L. H. MAIN BEAM
13. R. H. DIP BEAM
14. L. H. DIP BEAM
15. R. H. SIDELAMP
16. L. H. SIDELAMP
17. FOG LAMP SWITCH
18. MASTER LIGHTING SWITCH
19. HEADLAMP SWITCH AND FLASH
20. HORN COMPRESSOR
21. HORN RELAY
22. HORN PUSH
23. CIGAR LIGHTER
24. INTERIOR LIGHT AND SWITCH
25. L. H. DOOR SWITCH
26. R. H. DOOR SWITCH
27. OVERDRIVE SOLENOID
28. GEARBOX SWITCH
29. OVERDRIVE SWITCH
30. L. H. WINDOW LIFT MOTOR & SWITCH
31. R. H. WINDOW LIFT MOTOR & SWITCH
32. PANEL LIGHT SWITCH
33. PANEL LIGHT
34. PANEL LIGHT
35. PANEL LIGHT
36. PANEL LIGHT
37. PANEL LIGHT
38. PANEL LIGHT
39. NUMBER PLATE LAMP
40. L. H. TAIL LAMP
41. R. H. TAIL LAMP
42. FUSES
43. VOLTAGE STABILISER
44. IGNITION COIL
45. DISTRIBUTOR
46. TACHOMETER
47. FUEL GAUGE
48. TRANSMITTER
49. WATER TEMP GAUGE
50. TRANSMITTER
51. HEATER SWITCH
52. HEATER MOTOR
53. FLASHER SWITCH
54. R. H. FRONT FLASHER
55. R. H. REAR FLASHER
56. L. H. REAR FLASHER
57. L. H. FRONT FLASHER
58. FLASHER WARNING LIGHT
59. STOP LAMP SWITCH
60. R. H. STOP LAMP
61. L. H. STOP LAMP
62. SCREEN WASHER
63. SCREEN WASHER SWITCH
64. SCREEN WIPER SWITCH
65. SCREEN WIPER MOTOR
66. REVERSE LAMP SWITCH
67. R. H. REVERSE LAMP
68. L. H. REVERSE LAMP



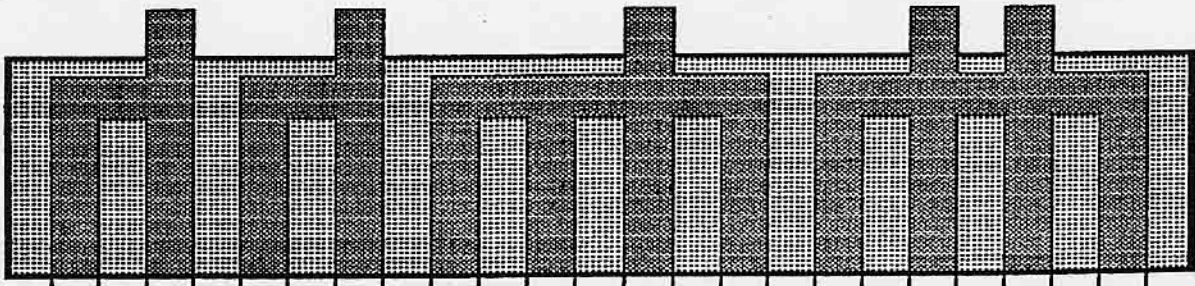
NAME SHAWNEE FUSE

1964

1800 COUPE

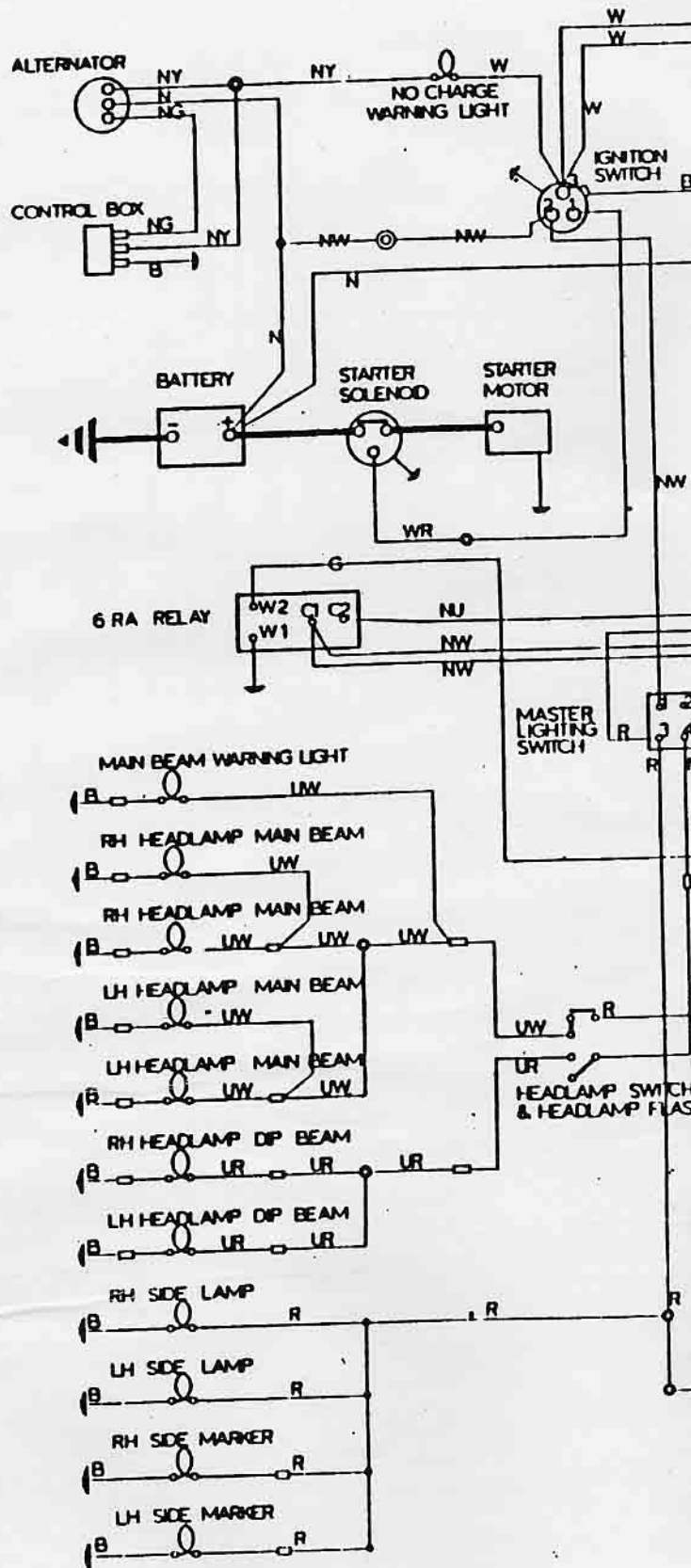
ORIGINAL GULF INC.  
WIRING NOT AVAILABLE,  
OF COMPANY WHO MADE  
IT. SORRY

*Davis*

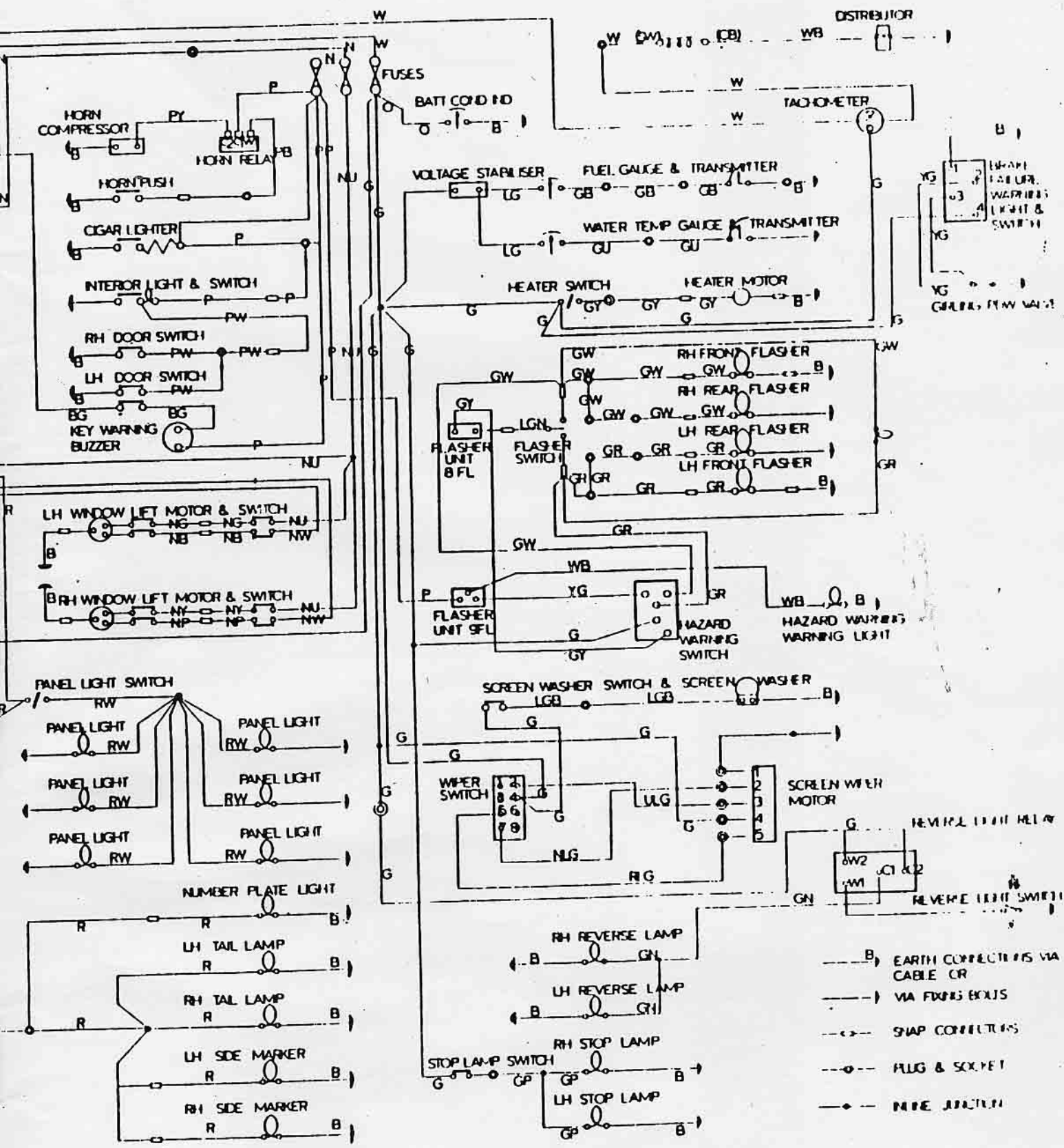


1	HORN	GREEN/WHITE
2	RADIATOR FAN SWITCH & SOLENOID	GREEN/WHITE & RED
3	ACCESSORY FEED TO BOOT (NOT USED)	GREEN
4	FUEL GAUGE	GREEN
5	WIPER MOTOR	GREEN
6	RADIO & INTERIOR LIGHTING	PURPLE
7	BRAKE LIGHT SWITCH	GREEN->GREEN/PURPLE
8	INDICATOR FLASHER UNIT	GREEN
9	PETROL PUMP	GREEN/YELLOW
10	CONSOLE LIGHT SWITCH STEERING COLUMN FLASHER SWITCH	BROWN/WHITE->BROWN/BLUE BROWN
11	HEADLAMP SOLENOID (MAIN)	RED
12	HEADLAMP SOLENOID (DIP)	RED

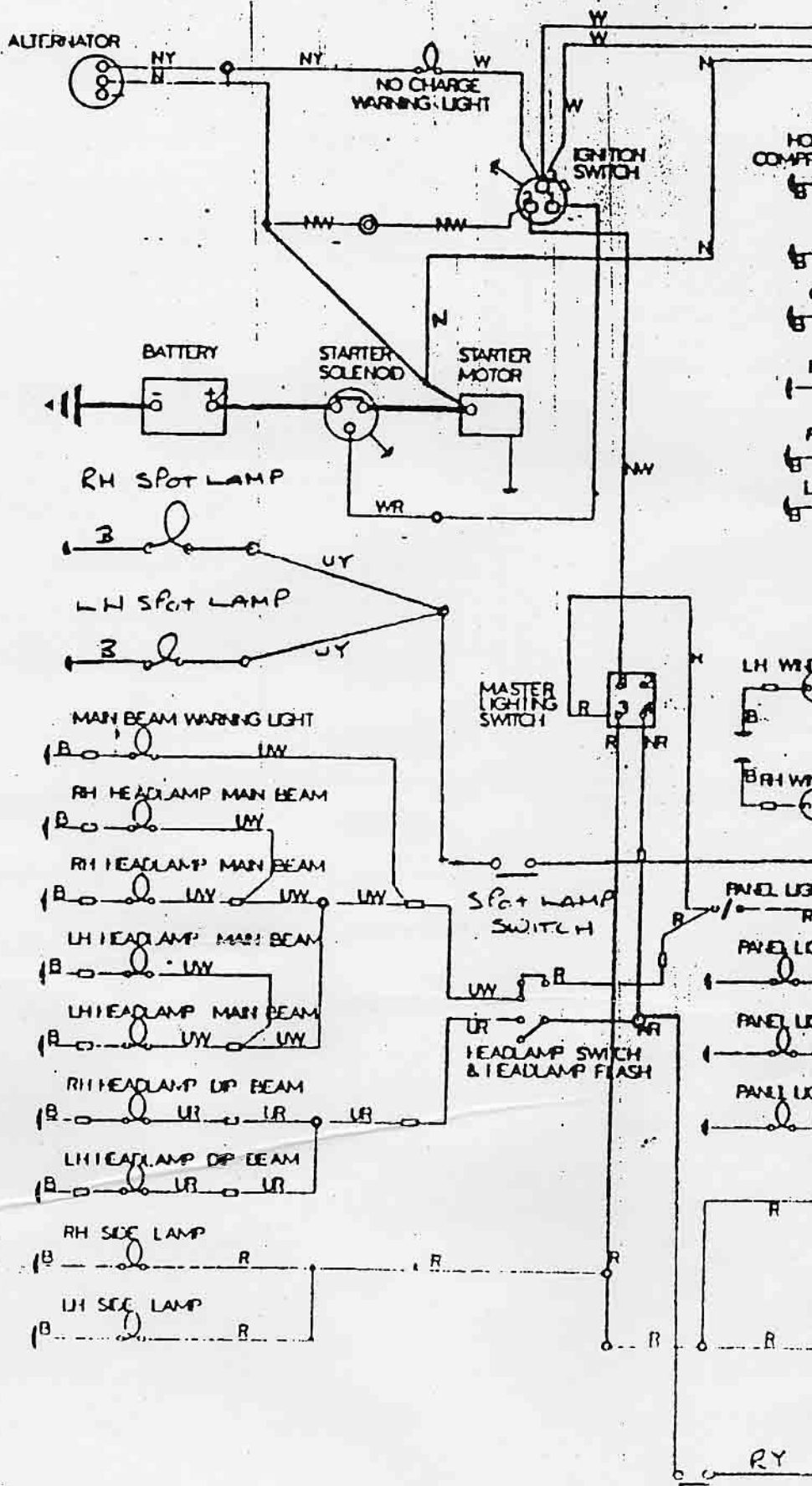
VOLVO 3 LITRE MANUAL







1970



- COLOR CODE
- BLACK
  - GREEN
  - BROWN
  - PURPLE
  - RED
  - BLUE
  - WHITE
  - YELLOW
  - LIGHT GREEN
  - SLATE/GREY

REAR FOG LAMP SWITCH

# 70 - 80 COUPLER

